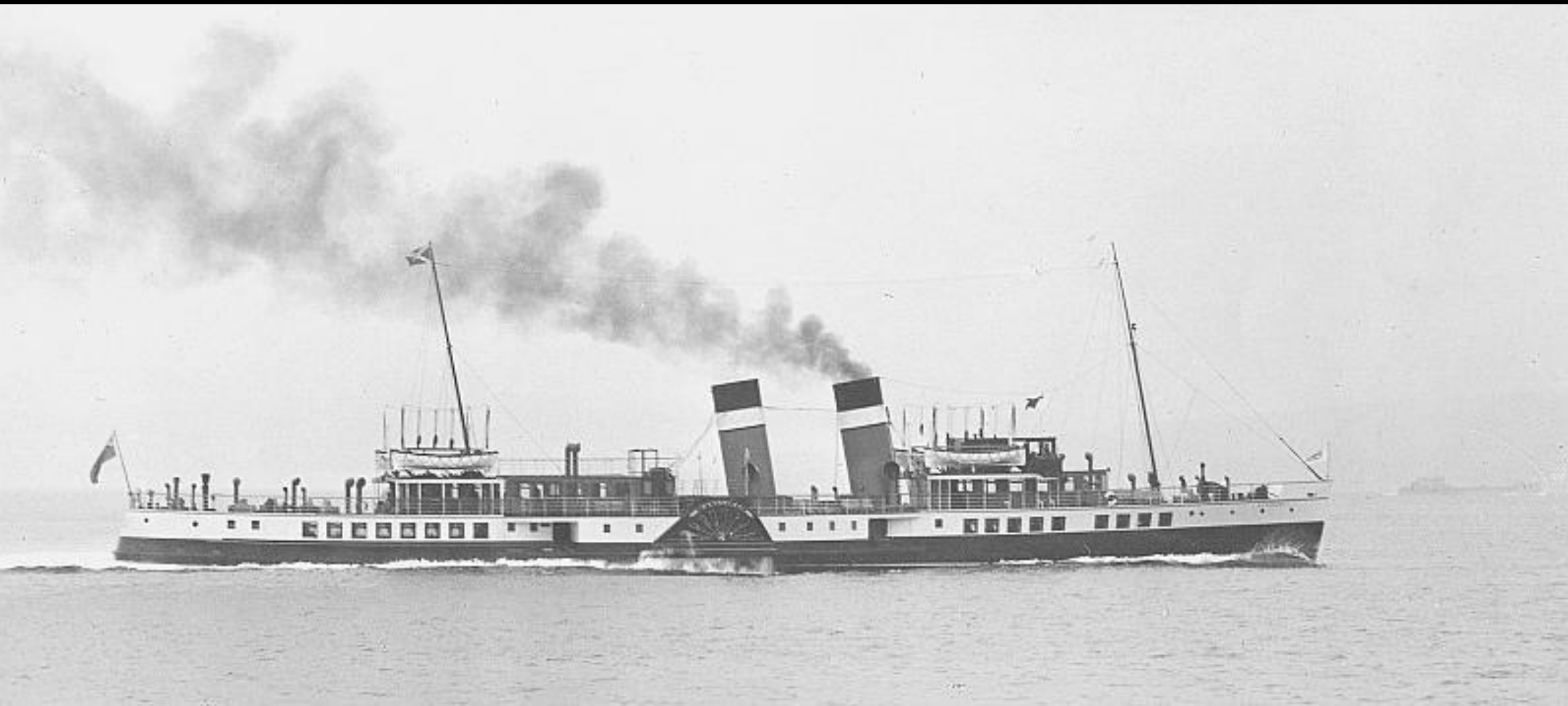


# Fuelling Paddle Steamer Waverley

Paul Semple  
General Manager  
Waverley Excursions Ltd.





Sea trials – 1947 – Coal Fired





1960s – Heavy Fuel Oil





1975 — 1<sup>st</sup> Public Sailing in Preservation



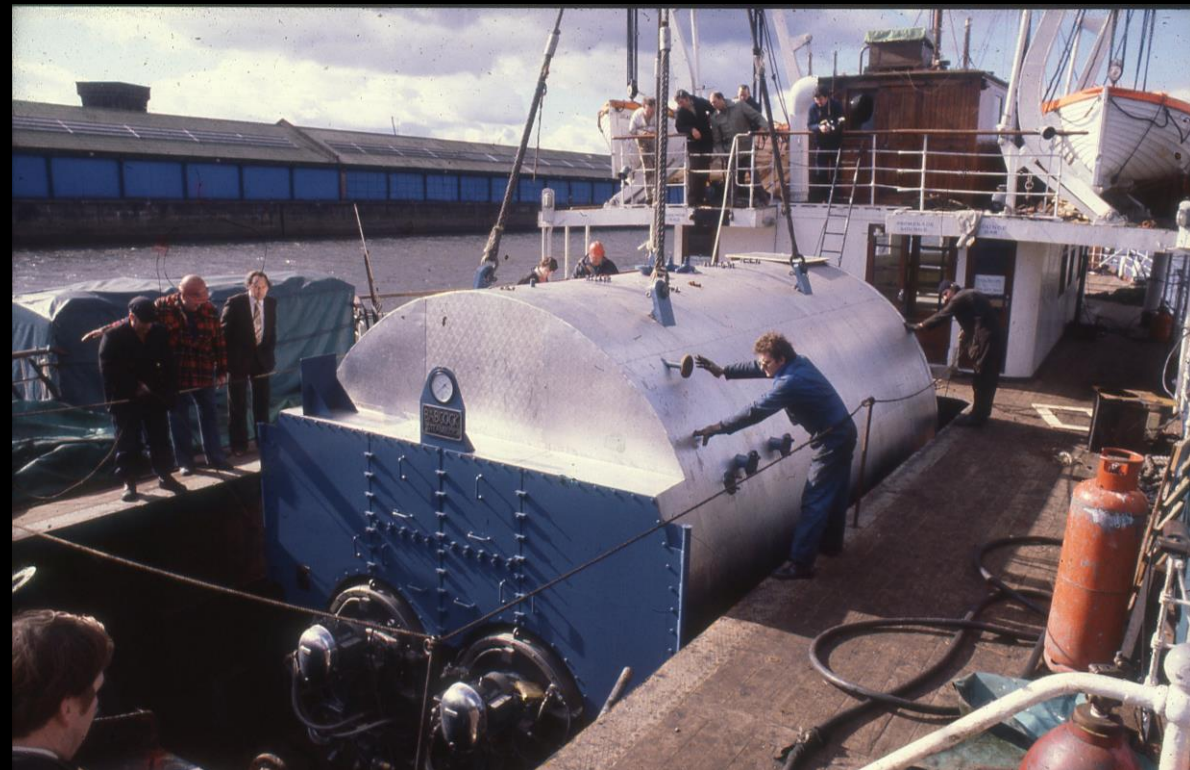


Late 1970s





1981 – 1<sup>st</sup> Re-Boiling



1981 – Old / New Boiler





Waverley's Triple Expansion Engine





2000 – Heritage Rebuild Phase I





Twin boilers since 2000





Heritage Rebuild Phase 2 - 2003





Burned only Marine Gas Oil since 2018



# Waverley's Operation (Pre-Covid):



# Waverley's Operation (Pre-Covid):

- Typical sailing season from May till October operating for around 110 days



# Waverley's Operation (Pre-Covid):

- Typical sailing season from May till October operating for around 110 days
- Over 100,000 passenger journeys recorded annually



# Waverley's Operation (Pre-Covid):

- Typical sailing season from May till October operating for around 110 days
- Over 100,000 passenger journeys recorded annually
- Waverley operates on the Firth of Clyde, Oban and West Coast, Liverpool / North Wales, Bristol Channel, South Coast and Thames



Dunoon - Firth of Clyde



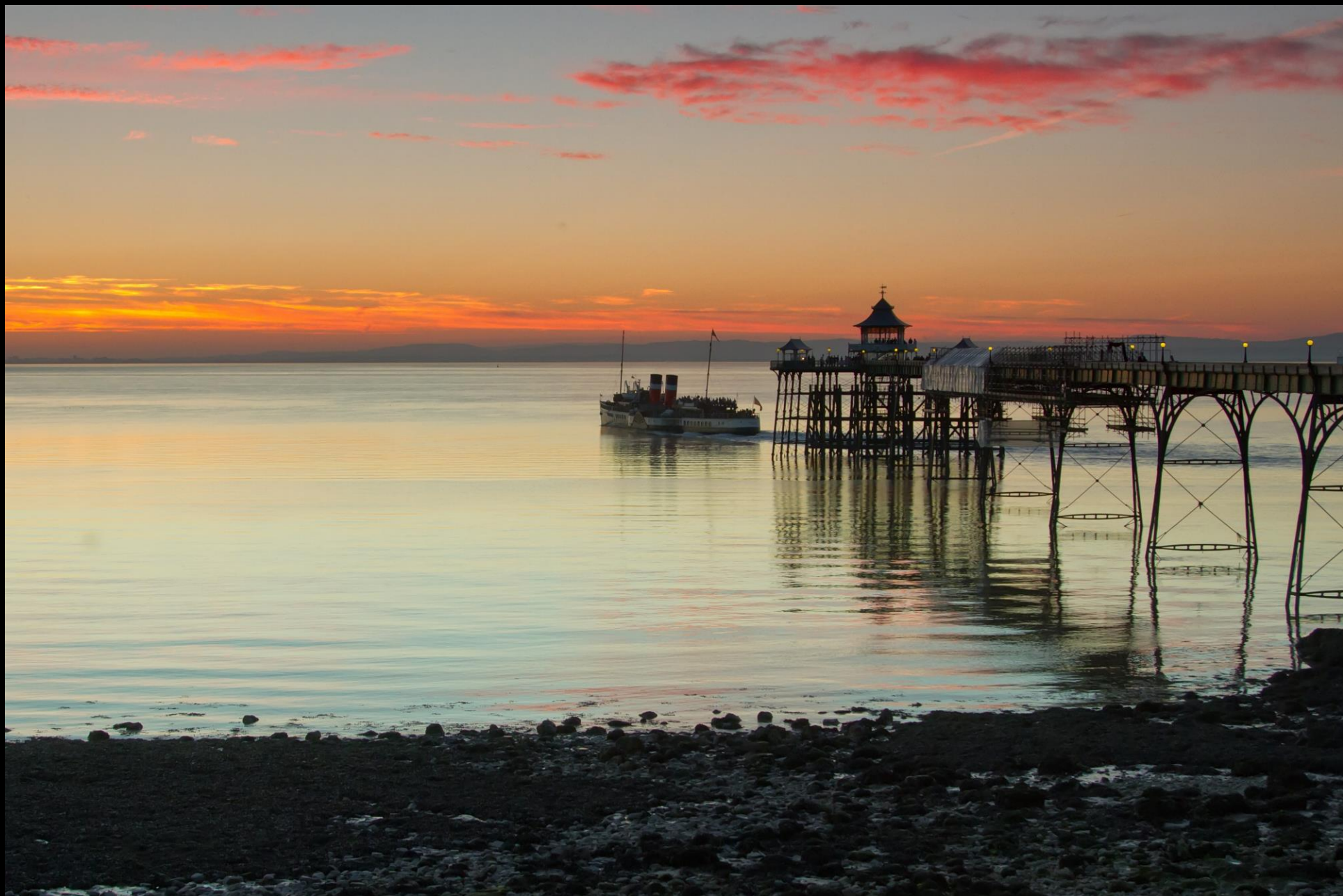


Skye



Isle of Wight





Clevedon – Bristol Channel





Tower Bridge



# Waverley's Operation (Pre-Covid):

# Waverley's Operation (Pre-Covid):

- Annual turnover of around £2m with no surplus funds (2018)



# Waverley's Operation (Pre-Covid):

- Annual turnover of around £2m with no surplus funds (2018)
- Crew of 25 who live aboard the vessel for the full season – single largest cost to the operation

# Waverley's Operation (Pre-Covid):

- Annual turnover of around £2m with no surplus funds (2018)
- Crew of 25 who live aboard the vessel for the full season – single largest cost to the operation
- Fuel is the second largest cost – over £400,000 in 2018



# Waverley's Operation (Pre-Covid):

- Annual turnover of around £2m with no surplus funds (2018)
- Crew of 25 who live aboard the vessel for the full season – single largest cost to the operation
- Fuel is the second largest cost – over £400,000 in 2018
- Fares for the season are normally set in spring but the cost of fuel can only be estimated – a fuel surcharge has been added in the past

# Fuel Issues:



# Fuel Issues:

- In service Waverley burns approx. 750 litres per hour

# Fuel Issues:

- In service Waverley burns approx. 750 litres per hour
- Bunker capacity of 38,000 litres



# Fuel Issues:

- In service Waverley burns approx. 750 litres per hour
- Bunker capacity of 38,000 litres
- Normally refuel every 3 days which causes logistical issues

# Fuel Issues:

- In service Waverley burns approx. 750 litres per hour
- Bunker capacity of 38,000 litres
- Normally refuel every 3 days which causes logistical issues
- Limited piers to take on fuel, particularly when away from the Clyde



# Fuel Issues:

- In service Waverley burns approx. 750 litres per hour
- Bunker capacity of 38,000 litres
- Normally refuel every 3 days which causes logistical issues
- Limited piers to take on fuel, particularly when away from the Clyde
- At some locations fuel can only be taken on from a barge rather than road tanker

# Fuel Issues:

- Price of fuel will typically vary across a season (in 2018 from 38p to 57p per litre)

# Fuel Issues:

- Price of fuel will typically vary across a season (in 2018 from 38p to 57p per litre)
- Fuel is approx. 25% of turnover with an annual consumption approaching 1 million litres



# Fuel Issues:

- Price of fuel will typically vary across a season (in 2018 from 38p to 57p per litre)
- Fuel is approx. 25% of turnover with an annual consumption approaching 1 million litres
- New boilers fitted in 2020, not expected to see any reduction in fuel costs

# Fuel Issues:

- Price of fuel will typically vary across a season (in 2018 from 38p to 57p per litre)
- Fuel is approx. 25% of turnover with an annual consumption approaching 1 million litres
- New boilers fitted in 2020, not expected to see any reduction in fuel costs
- Reduction in Sulphur emissions since 2018 with use of Marine Gas Oil



Fuelling Station – in aft funnel





Whitstable



Ilfracombe









January 2020





January 2020





April 2020





August 2020







